



LAKE SUPERIOR COLLABORATIVE

May 2022

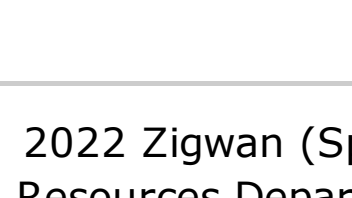
Have a project update, event, or news to share? Contact Erin at erin.burkett@wisc.edu to be included in the June edition.

Upcoming Lake Superior Collaborative meetings:

- May 12 - Brownbag Webinar - [Register](#)
- May 17 - Steering Team Meeting

News

Beta-test the new HABS Collaborative Research Mapper



Great Lakes HABS Collaborative

The [HABS Collaborative Research Mapper](#) is a new product intended to help researchers find project collaborators, learn about the current status of HABS projects in their region, & share key findings with the management community. [Please consider contributing a research project to the Mapper & share feedback on the functions & utility of this tool.](#) All research projects contributed during the beta-testing phase will be preserved & adapted as suggested improvements are deployed. [Learn more about the Great Lakes HABS Collaborative and this tool.](#)

Explore the Research Mapper

2022 Zigwan (Spring) Edition of Mashkiizibii Natural Resources Department's "Common Ground" available

The Mashkiizibii Natural Resources Department's latest issue of Common Ground is now available online. News & topics covered included updates on a community solar project, manoomin updates, information about fire safety & emerald ash borer, Chequamegon Point project updates, & new staff introductions!

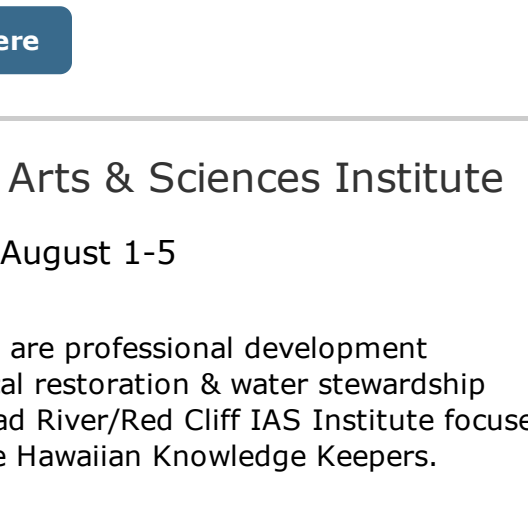
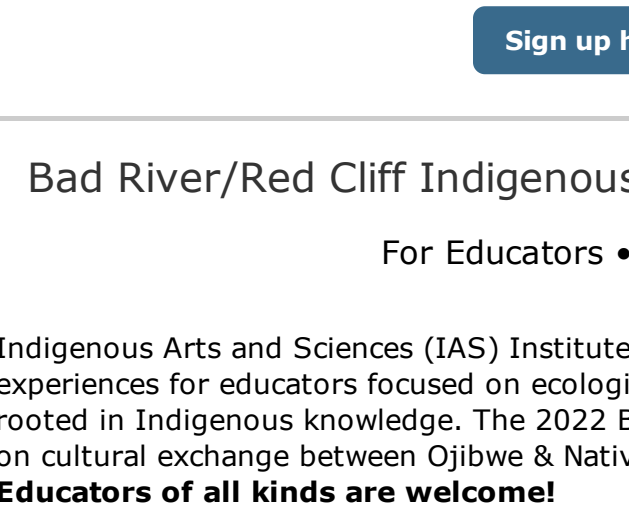
[Read Common Ground](#)

Wisconsin Sea Grant Seeking Guidance on 2024-2027 Strategic Plan

The [University of Wisconsin Sea Grant Institute](#) is seeking guidance on the development of its next strategic plan for 2024-2027. Please take ten minutes to complete this short survey & share your perspective on important issues facing Wisconsin & the Great Lakes.

[Share your input](#)

Volunteer for Spring Monitoring Season



Volunteer for Superior Rivers Watershed Association (SRWA) this spring monitoring season. Adventure into a stream to explore and collect specimens to help assess stream health. No experience necessary - all equipment & training provided! The next training sessions will be held on May 5 (virtual) and May 7 (in-person). If you cannot make one of these sessions but want to participate, please still sign up & SRWA staff will contact you.

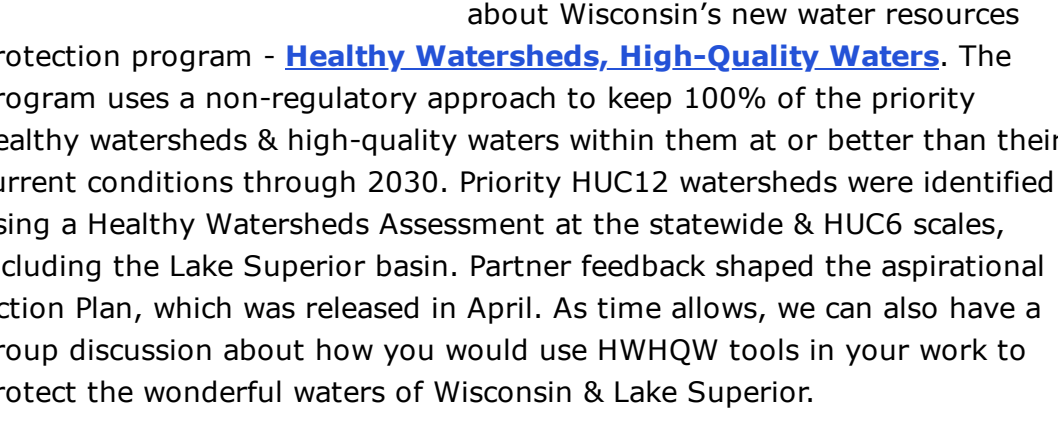
[Sign up here](#)

Bad River/Red Cliff Indigenous Arts & Sciences Institute For Educators • August 1-5

Indigenous Arts and Sciences (IAS) Institutes are professional development experiences for educators focused on ecological restoration & water stewardship rooted in Indigenous knowledge. The 2022 Bad River/Red Cliff IAS Institute focuses on cultural exchange between Ojibwe & Native Hawaiian Knowledge Keepers. **Educators of all kinds are welcome!**

[Learn more](#)

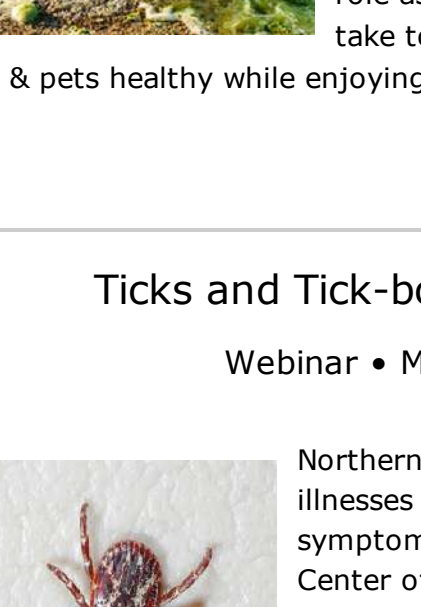
Event Hosts Wanted: WI Science Festival - Oct 10-16



Join hundreds of organizers around Wisconsin to connect people of all ages with science, technology, engineering, art, & math. In 2021, more than 43,000 people participated in events throughout 90+ communities in Wisconsin.

[Learn more](#)

Events



Protecting the Wonderful Waters of Wisconsin: The Healthy Watersheds, High-Quality Waters Program

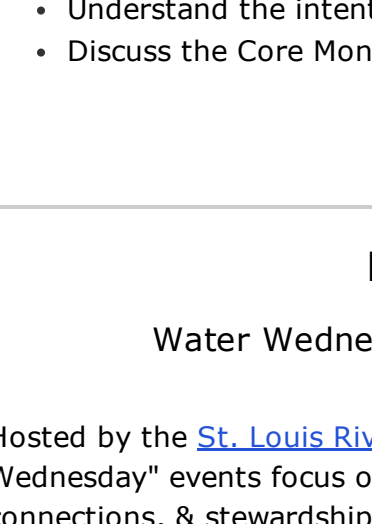
LSC Brownbag Webinar • May 12 • 11:00AM-12:00PM CT

Speaker: Pamela Toshner, statewide Lake & Watershed Protection Specialist & NW area Lake Biologist for the WI Department of Natural Resources

Overview: Webinar attendees will learn about Wisconsin's new water resources protection program - [Healthy Watersheds, High-Quality Waters](#). The program uses a non-regulatory approach to keep 100% of the priority healthy watersheds & high-quality waters within them at or better than their current conditions through 2030. Priority HUC12 watersheds were identified using a Healthy Watersheds Assessment at the statewide & HUC6 scales, including the Lake Superior basin. Partner feedback shaped the aspirational Action Plan, which was released in April. As time allows, we can also have a group discussion about how you would use HWHQW tools in your work to protect the wonderful waters of Wisconsin & Lake Superior.

[Register](#)

Harmful Algal Blooms and Your Health Lake Talks • May 12 • 7:00-8:00PM CT



Wisconsin Water Resources Science-Policy Fellow Jordan Murray will discuss harmful algal blooms or "HABS" in Wisconsin & what you can do to protect your health. She'll give an overview of the HABS program at the Wisconsin Department of Health Services & her role as coordinator. You'll learn practical steps you can take to avoid exposure & keep yourself, your loved ones, & pets healthy while enjoying Wisconsin's abundant lakes.

[Register](#)

Ticks and Tick-borne Diseases in Wisconsin Webinar • May 20 • 8:30-9:30AM CT



Northern Wisconsin is an epicenter for 6 tick-borne illnesses that can cause serious & sometimes long-lasting symptoms. UW-Madison researchers from the Midwest Center of Excellence in Vector-Borne Disease will talk about tick-borne disease types, prevention methods, & new research-based methods of monitoring & managing tick populations in the Northwoods.

This program is designed for natural resource professionals, local health care workers, farmers, visitors, chambers of commerce, outdoor-oriented businesses, loggers, & others who want to understand these diseases & reduce their risk of exposure.

About the speakers: *Dr. Susan Paskewitz* is an expert on the biology & control of mosquitoes and ticks that transmit diseases. *Dr. Xia Lee* is a vector biologist whose current research interests are in tick questing behavior & management of ticks in recreational parks & residential properties.

Hosted by [UW-Madison Division of Extension \(Ashland County\)](#).

[Register](#)

Collaborative Forest Landscape Restoration Program: Monitoring Overview & Next Steps

Sponsored by the U.S. Forest Service & hosted by National Forest Foundation • May 24 • 1:00-2:30PM CT

The suggested audience includes collaborative groups, Forest Service staff, partners that are new to the [Collaborative Forest Landscape Restoration Program](#), & CFLRP alumni. During this meeting, attendees will

- Connect with CFLRP alumni & other selected projects in the current cohort
- Learn more about multi-party monitoring lessons learned & best practices
- Understand the intent & background of the Common Monitoring Strategy
- Discuss the Core Monitoring Questions & next steps

[Register](#)

History of the Estuary

Water Wednesday Series • May 25 • 7:00-8:00PM CT

Hosted by the [St. Louis River Alliance](#). "Water Wednesday" events focus on deepening understandings, connections, & stewardship of the land & the St. Louis River. This month, local historians & researchers Heidi Bakk-Hansen & Gina Temple-Rhodes will discuss the history of the St. Louis River & Estuary, including early inhabitants, explorers, industrialization, & 1970's cleanup efforts.



[Register](#)

Great Lakes Commission Semiannual Meeting Green Bay • June 7-9

Great Lakes Commission meetings offer an opportunity for Great Lakes stakeholders to convene with colleagues & share perspectives on important Great Lakes issues. Join us as we continue to address issues of common concern, develop shared solutions, & collectively advance an agenda to protect & enhance the region's economic prosperity & environmental health.

[Register](#)

Job Board

- Great Lakes Stream Restoration Specialist** • Trout Unlimited • [Apply](#)
- J. Philip Keillor Fellowship** • Wisconsin Coastal Management & Wisconsin Sea Grant • [Application deadline June 1](#)
- *NEW* Deputy Tribal Historic Preservation Officer** • Mashkiizibii Natural Resources Department • [Position description](#)
- Water Resources Program Manager** • Mashkiizibii Natural Resources Department • [Position description](#)
- Multiple positions** • Great Lakes Indian Fish & Wildlife Commission • [View current openings](#)
- Multiple positions** • Chequamegon-Nicolet National Forest • [View current openings](#)
- Northern Wisconsin Aquatic Resources Seasonal Technician** • Trout Unlimited • [Apply](#)
- Environmental Health Specialist** • Red Cliff Treaty Natural Resources Division • [Position description](#)

Funding

- Environmental Quality Incentives Program (EQIP)** • Natural Resources Conservation Service • [Deadline May 20](#)
- Tribal Climate Resilience Program** • Bureau of Indian Affairs • [Deadline July 6](#)
- Partnerships for Climate Smart Commodities & Market Expansion** • US Department of Agriculture • [Deadlines April 8 & May 27](#)

The Lake Superior Collaborative is a network of organizations working in partnership to coordinate protection, restoration, & climate resilience efforts in the Wisconsin portion of the Lake Superior watershed.

[Learn More](#)

Lake Superior Collaborative Partners

Funding Partners

Partners-At-Large

Follow the LSC on Facebook & YouTube

Share this email:

Manage your preferences | [Opt out](#) using TrueRemove™
Got this as a forward? [Sign up](#) to receive our future emails.
View this email [online](#).

29270 County Highway G
Ashland, WI | 54806 US

This email was sent to .
To continue receiving our emails, add us to your address book.

[Subscribe](#) to our email list.