



Have a project update, event, or news to share? Contact: Erin at erin.burkett@wisc.edu to be included in the March edition.

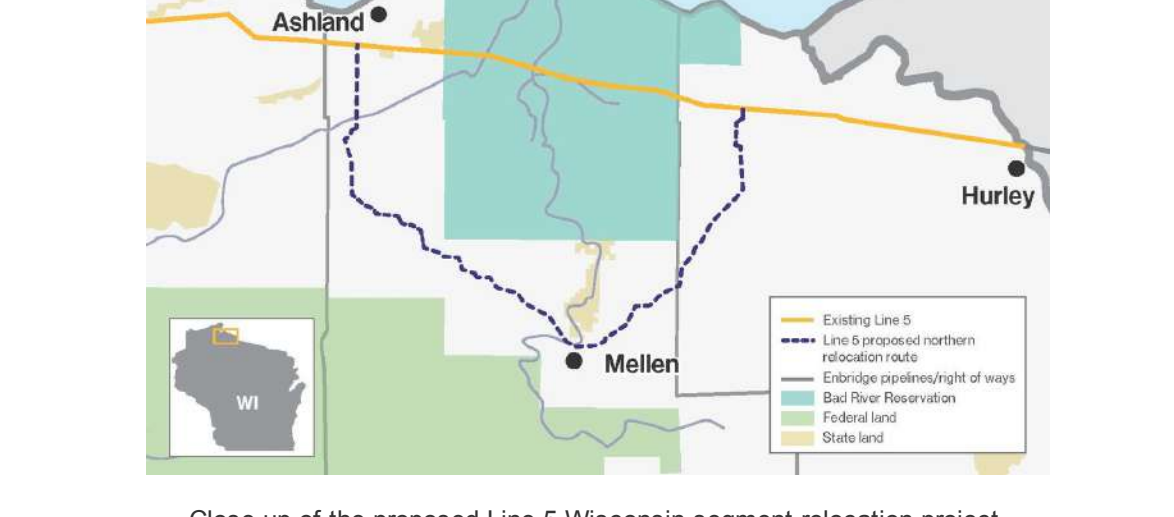
Upcoming Lake Superior Collaborative meetings:

- February 22 - Steering Team Meeting
- March 2 - Communications Workshop
- April 28 - Nearshore Monitoring Workgroup*
- April 29 - Slow the Flow Workgroup*

*Held in conjunction with the Lake Superior Collaborative Spring Symposium.

News

Lake Superior Collaborative Spring Photo Contest



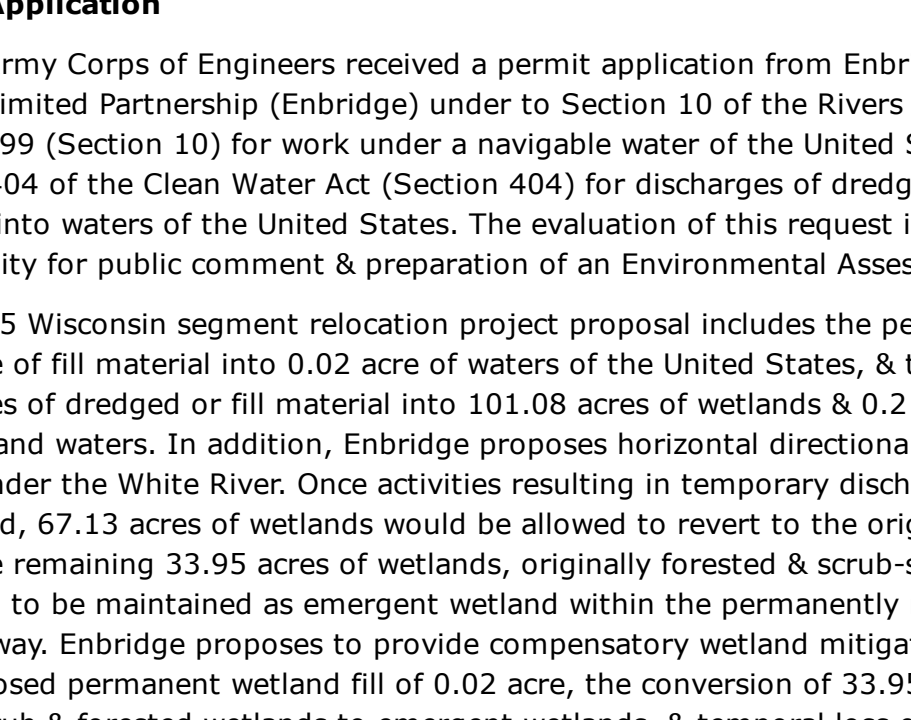
The LSC is collecting images to celebrate all the great conservation, stewardship, & environmental work happening in the Lake Superior basin of Wisconsin. Anyone can enter, & submissions can fall in the following categories:

- Resilience
- Relationships
- Restoration
-Not sure where your images fit? There's a "mishmash" category for that!

Winners will be announced during the LSC Spring Symposium in April.

[Enter the contest](#)

Wisconsin DNR & US Army Corps of Engineers accepting public comments on proposed Line 5 Pipeline Relocation



Close-up of the proposed Line 5 Wisconsin segment relocation project

Source: US Army Corps of Engineers

Background

Enbridge proposes constructing approximately 41 miles of a new crude oil pipeline to relocate its existing Line 5 pipeline around the Bad River Reservation & abandoning ~20 miles of the existing pipeline, including the section that currently crosses the Reservation.

The proposed route would cross approximately 185 waterways, including the Bad River, Brunsweller River, Marengo River, Tyler Forks, & the White River, & many unnamed ditches, streams, wetlands, & tributaries.

The existing Enbridge Line 5 pipeline is a 645 mile long, 30-inch diameter crude oil/natural gas liquid pipeline that has been operational since 1953. It originates at Enbridge's Superior Terminal in Superior, Wisconsin, continues through northern Wisconsin, the Upper Peninsula of Michigan, Straits of Mackinac, Lower Peninsula of Michigan, & terminates near Sarnia, Canada.

In Wisconsin, the existing Line 5 pipeline crosses Douglas, Bayfield, Ashland & Iron counties. Within Ashland County, the existing Line 5 pipeline crosses through 12 miles of the Bad River Reservation. In 2019, the Bad River Band of the Lake Superior Tribe of Chippewa Indians filed a federal lawsuit to require Enbridge to remove 12 miles of pipeline from their reservation.

Draft Environmental Impact Statement

The Wisconsin Department of Natural Resources (WDNR) [released a draft Environmental Impact Statement \(EIS\)](#) for the proposed reroute and is currently accepting public comments. The DNR's held a virtual public hearing on February 2 to hear comments regarding the draft EIS. [The hearing is available on YouTube.](#)

To submit comments on the draft EIS (due March 4):

- Email comments to DNROEEACOMMENTS@WI.GOV, or
- Share comments by U.S. mail to "Line 5 EIS Comments, DNR (EA/7)," 101 South Webster Street, Madison, WI 53707.
- Learn more [HERE](#).

Permit Application

The US Army Corps of Engineers received a permit application from Enbridge Energy, Limited Partnership (Enbridge) under to Section 10 of the Rivers & Harbor Act of 1899 (Section 10) for work under a navigable water of the United States & Section 404 of the Clean Water Act (Section 404) for discharges of dredged or fill material into waters of the United States. The evaluation of this request includes opportunity for public comment & preparation of an Environmental Assessment.

The Line 5 Wisconsin segment relocation project proposal includes the permanent discharge of fill material into 0.02 acre of waters of the United States, & temporary discharges of dredged or fill material into 101.08 acres of wetlands & 0.2 acre of non-wetland waters. In addition, Enbridge proposes horizontal directional drilling (HDD) under the White River. Once activities resulting in temporary discharges are completed, 67.13 acres of wetlands would be allowed to revert to the original cover type. The remaining 33.95 acres of wetlands, originally forested & scrub-shrub, are proposed to be maintained as emergent wetland within the permanently maintained right-of-way. Enbridge proposes to provide compensatory wetland mitigation for the proposed permanent wetland fill of 0.02 acre, the conversion of 33.95 acres of scrub-shrub & forested wetlands to emergent wetlands, & temporal loss of wetland functions.

To submit comments on the permit application (due March 7):

- Email: CEMVP-L5WSR-PN-Comments@usace.army.mil
- Learn more [HERE](#).

Storytelling Mentorship Opportunity



The [Superior Waters Story Corps](#) is offering an opportunity for anyone 16 or older to work with a Wisconsin talented storyteller/mentor. This is made possible thru a grant from the Duluth Foundation. You will meet with the mentor, build your skills in storytelling, & be involved with a Story Hour in which you share your story. The focus of this project is our shared experiences in the natural world.

[Interested? Fill out this form!](#)

Northland College Publishes White Paper on Artesian Groundwater Resources

On September 27, 2021 the Mary Griggs Burke Center for Freshwater Innovation at Northland College held a water summit at the Big Top Chautauqua, to discuss the groundwater resources of Bayfield County & implications for future withdrawals. Expert panel presentations & audience Q&A focused on the big-picture issues raised by the controversial water bottling proposal in Herbster, Wis., & worked to provide attendees more context & perspective about the region's artesian resources.

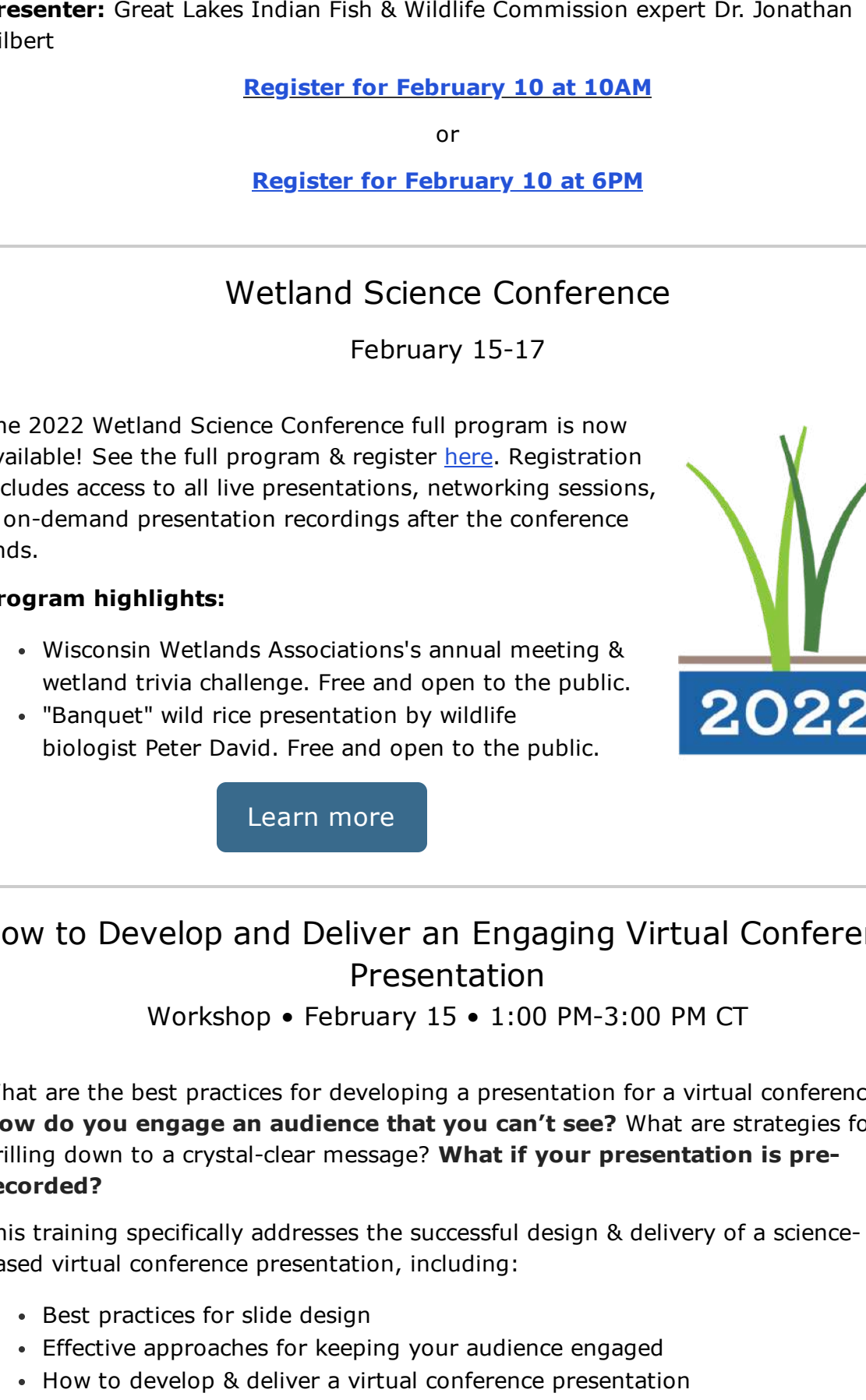
Highlights from this panel discussion, & forward-looking recommendations for protecting rural artesian groundwater resources, were recently released by the Burke Center in a [white paper](#) titled, **AVERSION TO DIVERSION Wisconsin's Artesian Resources and Implications for Future Withdrawals**. The document is an outgrowth of that evening's proceedings & focuses on some of the broader questions that have been raised by the Herbster proposal.

[Read the report](#)

Events

Ojibwe Storytelling Series

Virtual Program • February 8th & 15th



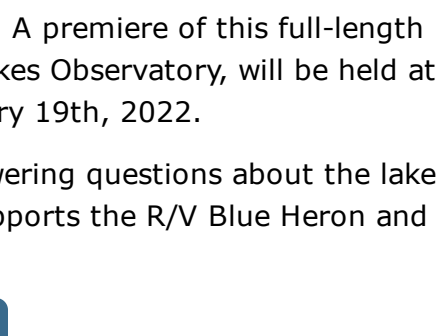
In Ojibwe culture, winter is storytelling season. The Wisconsin Historical Society is celebrating this by featuring Ojibwe storytellers in a four-part virtual series every Tuesday from 7 to 8 p.m., Jan. 25-Feb. 15, 2022.

[Register](#)

Update on the Spirit Lake Great Lakes Legacy Act Project

River Talk • February 9 • 7:00 PM CT

The EPA updates work at the Spirit Lake site under the Great Lakes Legacy Act. Loomis will provide technical updates on progress to-date & the plan for remediation of the Spirit Lake project area.



Presenter: Mark Loomis, Environmental Protection Agency Great Lakes National Program Office

[Learn more](#)

Treaty Rights 101

Presentation & Discussion • February 10 • 10:00 AM & 6:00 PM CT



Treaties & GLIFWC member tribes

Source: Great Lakes Indian Fish & Wildlife Commission

Participants will learn about Treaty Rights including the history of the 4 cession treaties in the Great Lakes Region (Treaties of 1836, 1837, 1842 and 1854). This talk will include topics such as co-management arrangements, tribal consultation, the role of GLIFWC in relation to spearfishing, deer hunting & mo'ingan (wolves), & implications of the Lac Courte Oreilles vs Wisconsin decision in Wisconsin.

Presenter: Great Lakes Indian Fish & Wildlife Commission expert Dr. Jonathan Gilbert

[Register for February 10 at 10AM](#)

or

[Register for February 10 at 6PM](#)

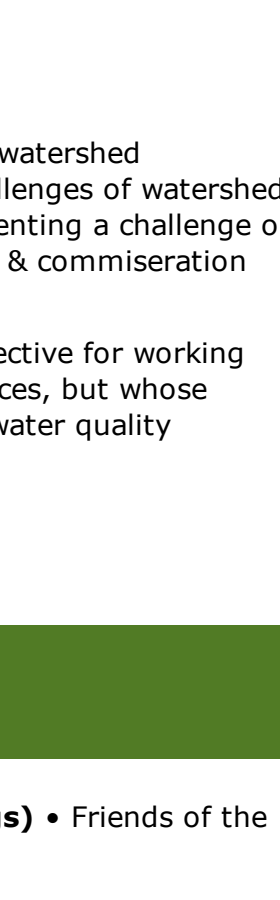
Wetland Science Conference

February 15-17

The 2022 Wetland Science Conference full program is now available! See the full program & register [here](#). Registration includes access to all live presentations, networking sessions, & on-demand presentation recordings after the conference ends.

Program highlights:

- Wisconsin Wetlands Association's annual meeting & wetland trivia challenge. Free and open to the public.
- "Banquet" wild rice presentation by wildlife biologist Peter David. Free and open to the public.



[Learn more](#)

How to Develop and Deliver an Engaging Virtual Conference Presentation

Workshop • February 15 • 1:00 PM-3:00 PM CT

What are the best practices for audience that you can't see? For a virtual conference? How do you engage an audience that you can't see? What are strategies for drilling down to a crystal-clear message? What if your presentation is pre-recorded?

This training specifically addresses the successful design & delivery of a science-based virtual conference presentation, including:

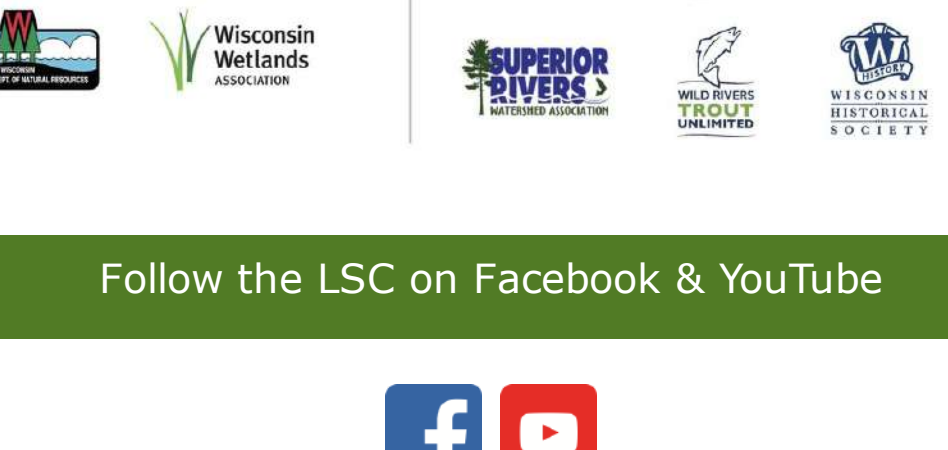
- Best practices for slide design
- Effective approaches for keeping your audience engaged
- How to develop & deliver a virtual conference presentation
- Message framing

Hosted by the Old Woman Creek & Lake Superior NERRs, this event is part of the [Get Your Science Moving Series](#). Contact Karina Heim (karina.heim@wisc.edu) if the cost to attend is a barrier for you.

[Register](#)

Freshwater Documentary Film Premiere

NorShor Theater, Duluth • February 19 • 7PM CT



The short documentary [Freshwater](#) received rave reviews in 2021. The film features Lake Superior, its surfers, & the science of the lake. Freshwater's producers worked with the Large Lakes Observatory to create a longer version of the film that highlights & supports the mission of LLO scientists. A premiere of this full-length documentary, with proceeds benefiting the Lake Lakes Observatory, will be held at the NorShor Theater in Duluth on Saturday February 19th, 2022.

The screening will include a panel of scientists answering questions about the lake after the premiere. Tickets are \$25 & this event supports the R/V Blue Heron and Large Lakes Observatory.

[Learn more](#)

Women Woodland Owners

Virtual Conference • March 3-5

The [Women Owning Woodlands Network](#) is hosting a free virtual conference for women woodland owners, stewards, & enthusiasts. Join women forest stewards from across the country for a conference focused on forging connections between women & forest stewardship.

Topics will include:

- March 3 (6-7:30 pm): **Women & Forest Stewardship** – Gain inspiration from women woodland stewards from across the country.
- March 4th (6-7:30 PM): **Forging Connections** – Connect with other women landowners through story-sharing & have your forestry & stewardship questions answered.
- March 5 (11 AM-1 PM): **Stewardship Skills Courses** – Learn from women professionals about topics such as Forest Health, Wildlife, Forest Management, Invasive Plants, Wildfires, Agroforestry, Legacy Planning, & more!

[Learn more](#)

St. Louis River Summit

Conference • March 7-9

Registration is open for the 12th Annual St. Louis River Summit: River Transformations. Summit presentations and networking sessions will be offered through a virtual program this year. In-person events will include a poster session, River Talk, & field trips.

[Register](#)

Wisconsin Section of the American Water Resources Association

Virtual Conference • March 10-11

Registration is now open for the 45th annual WI AWRA meeting. This year's theme is **Managing Water Resources in a Changing Climate**. Plenary & oral sessions will address Wisconsin surface water & groundwater issues.

Highlights:

- Student career workshop
- Breakout sessions on Wisconsin Initiative on Climate Change Impacts (WICCI); Web-based Dashboards and Decision-support Systems for Water Resources; & Groundwater & Water Policy
- General sessions on surface & groundwater quality, hydrogeology, shorelines, & urban hydrology.
- Evening plenary by Nadia Vogt, senior project manager at the Milwaukee Metropolitan Sewerage District. Vogt will present **Using Investments in Water to Build Social, Environmental, and Economic Resilience in Our Communities**.

[Register](#)

Life Hacks over Lunch: A Meet-up Series for Watershed Professionals

March 18 • April 15 • May 20

Life Hacks over Lunch is a free, virtual peer-learning series for watershed professionals to share ideas and advice for solving real-life challenges of watershed projects. In each meet-up, one person kicks things off by presenting a challenge or issue to the group to "hack." Then conversation, collaboration, & commiseration ensues!

March Hack Topic: What engagement strategies could be effective for working with farmers who are resistant to adopting conservation practices, but whose management practices are contributing disproportionately to water quality problems in a watershed?

[Register to attend](#)

Job Board

- *NEW* Outdoor Education Center Internship (2 openings)** • Friends of the North Pikes Creek Wetlands • [Apply by February 25](#)
- *NEW* Geospatial Analyst** • Wisconsin Wetlands Association • [Apply by February 25](#)
- *NEW* Post-Doc, Freshwater Ecosystem Research and Monitoring Lab** • University of Minnesota-Duluth Natural Resources Research Institute • [Apply here](#)
- *NEW* Northern Wisconsin Aquatic Resources Seasonal Technician** • Trout Unlimited • [Apply here](#)
- *NEW* Northern Wisconsin Lead Seasonal Technician** • Trout Unlimited • [Apply here](#)
- Summer Internship Program** • Wisconsin Sea Grant • [Apply by February 22](#)
- Outreach & Education Coordinator** • Wisconsin Tribal Conservation Advisory Council • [Position description](#)
- Multiple Positions** • Great Lakes Indian Fish & Wildlife Commission • [View openings](#)
- Multiple Positions** • Red Cliff Treaty Natural Resources Division • [View openings](#)
- Multiple Positions** • Mashkizibi Natural Resources Department • [View openings](#)

Funding

- Lake Conservation Grant** • Midwest Glacial Lakes Partnership • [Deadline February 18](#)
- Norma & Stanley DeBoer Quiet Trails Fund** • Natural Resources Foundation of Wisconsin • [Deadline March 1](#)
- Municipal Flood Control Grant Program** • Wisconsin Department of Natural Resources • [Deadline March 15](#)

The Lake Superior Collaborative is a network of organizations working in partnership to coordinate protection, restoration, & climate resilience efforts in the Wisconsin portion of the Lake Superior watershed.

[Learn More](#)

Lake Superior Collaborative Partners

Funding Partners

Partners-At-Large

Follow the LSC on Facebook & YouTube

