

Lake Superior Commons

News from the Lake Superior Collaborative

February 2021

The Lake Superior Collaborative was formed to facilitate collaboration and coordination among the governmental and non-governmental organizations and academic institutions that work to protect and restore natural resources in Wisconsin's Lake Superior Basin.

[Learn More](#)

Upcoming Events



2021 Lake Superior Collaborative Virtual Symposium

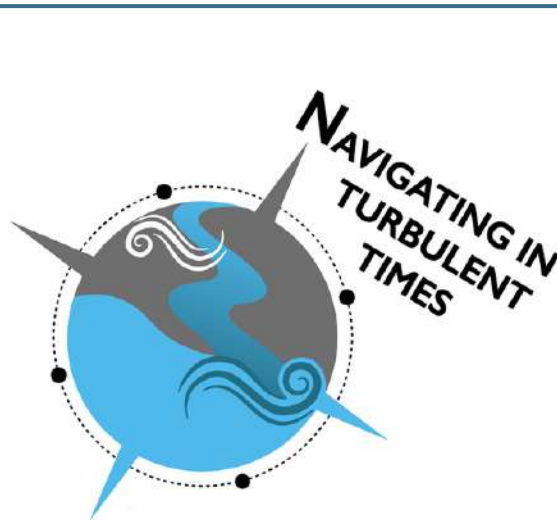
8:30am-12:00pm Friday March 12

This symposium is for Lake Superior Collaborative (LSC) partners and organizations or individuals interested in learning more about the LSC. This event offers networking opportunities, lightning talks, and break-out discussions centered on the Lake Superior basin of Wisconsin. Topics covered will include an overview of the LSC including a 5-year Action Plan, the Lake Superior Lakewide Action and Management Plan, and updates from regional partners. Registration is free.

[Information & Registration](#)

2021 Wisconsin Water Week

March 8-12



Registration is now open for the first annual Wisconsin Water Week.

Lake Superior events include keynote speaker Dr. Nancy Langston, environmental historian & author, *Sustaining Lake Superior: Hope for the Future in a Warming World*



Keynote speaker Dr. Nancy Langston

View full the [schedule-of-events](#) for the Lake Superior watershed.

Wetland Science Conference

The annual [Wetland Science Conference](#), held February 16-19, is an opportunity to learn about wetland research, restoration, and management, hear about approaches to incorporating wetlands into watershed planning, and look ahead to the future of wetland science and practices in Wisconsin. [Learn more.](#)

St. Louis River Summit

Join the 11th Annual Summit to celebrate successes and look toward the future of the St. Louis River Estuary. This event highlights the many ways the St. Louis River Estuary contributes to community well-being in the Twin Ports and beyond. [Student registration is free.](#)



MAY 17-21, 2021 | ONLINE

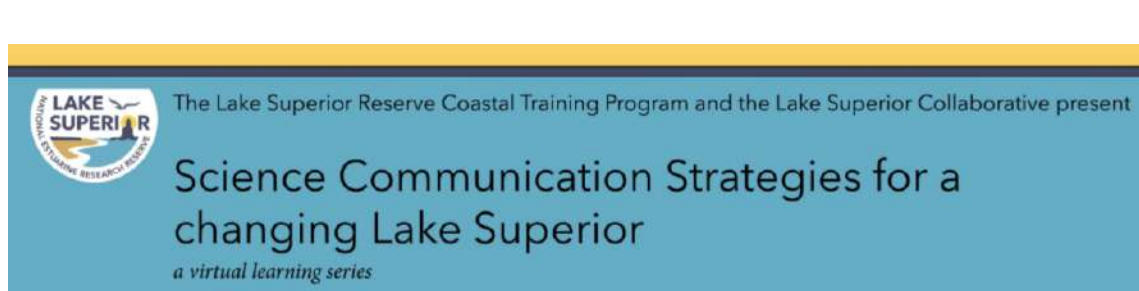
BRIDGING: Knowledges • Seven Generations • Land-to-Lake

Conference on Great Lakes Research

The 64th annual Conference on Great Lakes Research will be held virtually May 17-21, 2021. Thirty-six sessions and five workshops have been proposed to complement the theme *Bridging: Knowledges • Seven Generations • Land-to-Lake*. Attendees are encouraged to submit abstracts for specific sessions, but general contributions will also be considered.

[Submit an Abstract](#)

Workshops & Training Opportunities



This skill-building series is designed for coastal decision-makers, scientific researchers, & government employees who want to gain confidence in their ability to effectively communicate. [View the complete 2021 schedule.](#)

Crafting a Story: Journalist Perspectives on Media Storytelling

2:00 - 3:30 PM CT on Thursday, March 4 | [Register](#)

The Message Box: Communicating Your Science Effectively

2:00 - 4:00 PM CT on Wednesday, March 24 & Thursday, March 25*

*Note: This is a two-part workshop. | [Register](#)

Fish Passage, Flood Resiliency, and Road Stream Crossings Workshop

This half-day workshop, held on Monday, February 25th, will cover fish passage design, permitting & construction, & more. This event is designed for engineers, conservation professionals; Tribal, town, and county road workers and decision-makers; contractors; and engaged lake associations and citizens. For more information, contact Chris Collier at chris.collier@tu.org. [Register by February 23rd.](#)

Job Opportunities

St. Louis River Wild Rice & Habitat Coordinator, Wisconsin DNR

[View position description & apply.](#)

Clean Boats Clean Waters (CBCW) Inspector, Douglas County

[View position description & apply.](#)

Great Waters Research Collaborative Project Manager, UW-Superior

[View position description & apply.](#)

Great Waters Research Collaborative Quality Assurance Technician, UW-Superior

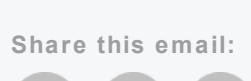
[View position description & apply.](#)



January webinar recording now available on the LSC YouTube page

Monitoring Lake Superior Coastal Wetlands with High-Resolution Satellite Imagery and Hydrological Modeling, **Laura Bourgeau-Chavez**

Share this email:



[Manage](#) your preferences | [Opt out](#) using TrueRemove™

Got this as a forward? [Sign up](#) to receive our future emails.

View this email [online](#).

29270 County Highway G

Ashland, WI | 54806 US

This email was sent to .

To continue receiving our emails, add us to your address book.

emma

[Subscribe](#) to our email list.