



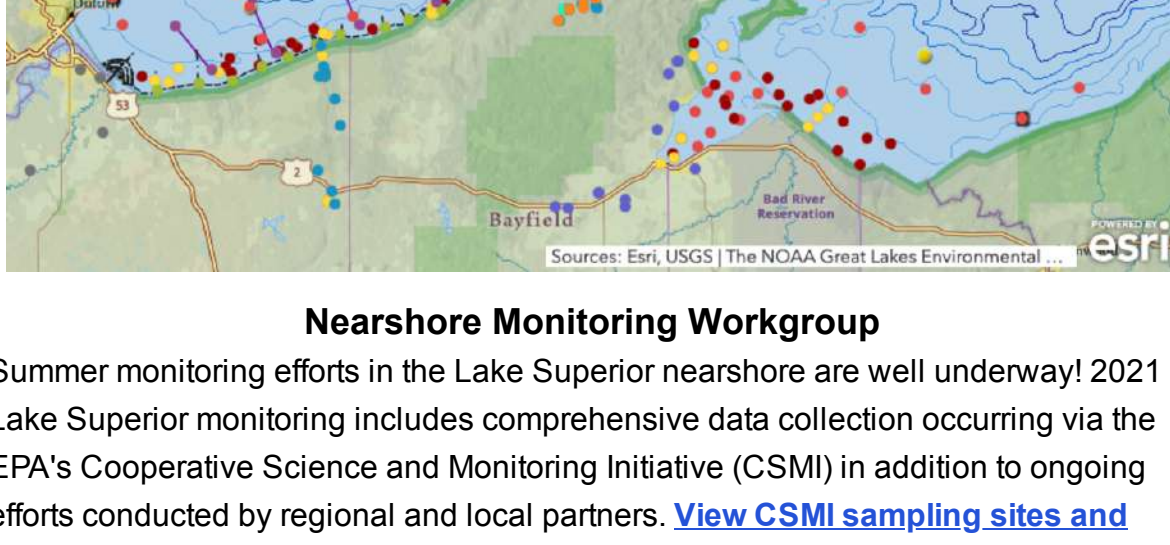
# LAKE SUPERIOR COLLABORATIVE

## August 2021

The Lake Superior Collaborative (LSC) is a network of organizations working in partnership to coordinate protection, restoration, & climate resilience efforts in the Wisconsin portion of the Lake Superior watershed.

[Learn More](#)

### News

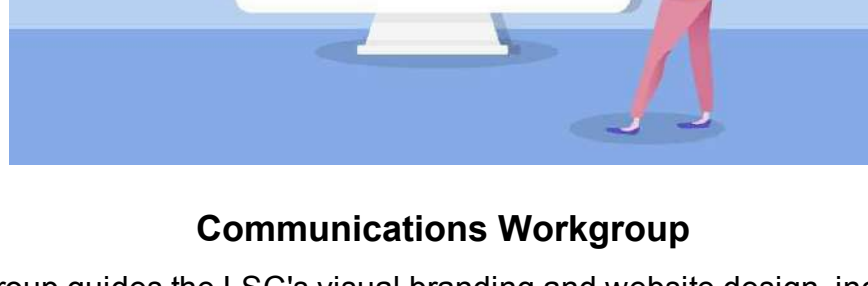


#### Nearshore Monitoring Workgroup

Summer monitoring efforts in the Lake Superior nearshore are well underway! 2021 Lake Superior monitoring includes comprehensive data collection occurring via the EPA's Cooperative Science and Monitoring Initiative (CSMI) in addition to ongoing efforts conducted by regional and local partners. [View CSMI sampling sites and additional data collection details.](#)

Contact Matt Hudson [mhudson@northland.edu](mailto:mhudson@northland.edu) for more information.

Related News: [Researchers Tracking Bacteria to its Source](#); [Scientists look for clues to Lake Superior algae blooms](#); [Call for Abstracts - 2nd Annual Harmful Algal Bloom Virtual Symposium](#)



#### Communications Workgroup

This workgroup guides the LSC's visual branding and website design, including providing input on LSC website content & design and overseeing the creation of the LSC and LSC member logos. Thanks to a 2021-2022 Wisconsin Coastal Management Program grant award, our next endeavor is redesigning the Lake Superior Collaborative website and adding a geodatabase that will highlight restoration and other projects completed across the Lake Superior basin since 2015. **We are actively seeking new workgroup members!** Contact Erin Burkett [erin.burkett@wisc.edu](mailto:erin.burkett@wisc.edu) if you want to get involved.

Related News: [Gov. Evers Announces \\$1.4 Million in grants for Wisconsin's coastal communities](#)



#### Climate Critical Lands & Carbon Storage in Wisconsin's Landscapes Report Published

The Wisconsin Academy of Sciences, Arts & Letters report, *Carbon Storage in Wisconsin's Landscapes*, is available online. The Academy held a corresponding briefing that brought together numerous individuals representing a wide range of organizations to identify priorities and potential for storing carbon in Wisconsin's climate-critical lands. [Watch the briefing and download the report.](#)



#### Superior Rivers Annual Report

The Superior Rivers Watershed Association's 2020 Annual Report includes recent organizational developments, updates from the Water Quality Monitoring, Education, and Restoration programs, and news from the volunteer committee seeking Wild and Scenic Designation for the Bad River. [View or download the report.](#)



#### A River of Poems

Wisconsin Sea Grant recently published we published a book based on the poetry reading held in conjunction with the 2021 St. Louis River Summit. [Download A River of Poems.](#)



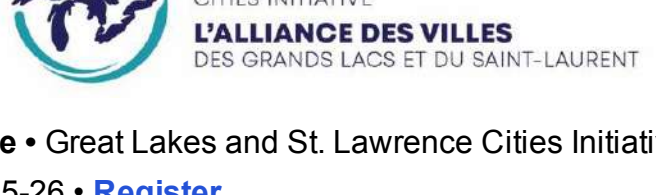
#### New GLIFWC StoryMap Examines Historical Use of Northern Wisconsin by the Lake Superior Anishinaabe

Recollected through Eliza Morrison's letters, this StoryMap outlines Lake Superior Anishinaabe historical use of Northern Wisconsin between 1837 and 1921. [View and explore the StoryMap.](#) Created by Hannah Arbuckle, Outreach Coordinator of The Great Lakes Indian Fish and Wildlife Commission (GLIFWC).

### Events

**Paddle** • 2021 SLRA Annual Canoe Trip • August 7th, 9:30 AM - 11:30 AM • [Register by August 5th](#)

The St. Louis River Alliance's Annual Canoe Trip is back! Paddlers will explore the newly designate St. Louis River Estuarine Water Trail. Cost: \$5-\$10/person, some scholarships are available.



**Virtual Conference** • Great Lakes and St. Lawrence Cities Initiative Annual General Meeting • August 25-26 • [Register](#)

Join fellow Mayors at the 2021 virtual Great Lakes and St. Lawrence Cities Initiative Annual General Meeting to discuss virtual climate challenges facing cities and their impact into the future. Featuring keynote speaker Erin Brockovich.

**Virtual Conference** • Understanding Algal Blooms: State of the Science • September 8, 8:30 AM - 2:00 PM CT • [Learn More](#)

**Overview:** Research and outreach leaders will highlight current scientific knowledge related to algal blooms, present findings from recent studies and identify important areas of uncertainty. A preliminary list of confirmed speakers is now available on the conference website, with more coming soon. Free registration.



Submit your photos by October 4 • [Learn More](#)

**Fall Webinar Series** • Perspectives on urban flood resilience: How different fields tackle one of the world's most prevalent disasters • September 8th - October 13th, 11:00am - 12:00pm • [Register](#)

This seminar series shares research on urban flooding, recommendations for how to better future impacts or approach challenges, and highlights areas of needed research and collaboration. Hosted by [CUAHSI](#), this series seeks to reach scientists at all stages of their careers, policymakers, and urban flood practitioners to establish connections between members of different fields, shed light on interdisciplinary research and methodologies, and define calls to action for both research and practice.

### Job Opportunities

**Water Quality Program Coordinator** • Superior Rivers Watershed Association • [Application deadline August 16](#)

**Water Resources Program Manager** • Mashkiizibii Natural Resources Department • [Open until filled](#)

**Wetland Specialist** • Mashkiizibii Natural Resources Department • [Open until filled](#)

**Lake Ecology Education Program (LEEP) Coordinator** • Friends of the Eau Claire Lakes Area • [Applications due September 1st](#)

**Executive Director** • Wisconsin Society for Ornithology • [Application review begins August 9](#)

### Funding

**Community Planting and Pollinator Habitat Grant Program** • American Transmission Company • [Applications accepted July 1-September 20](#)

**Urban Forestry Grant** • Wisconsin Department of Natural Resources • [Proposals accepted July 1-October 1](#)

**GLRI Nonpoint Source Runoff & Nutrient Reduction** • Environmental Protection Agency • [Applications due August 20](#)

**C.D. Besadny Conservation Fund** • Natural Resources Foundation of Wisconsin • [Proposals due September 1st](#)

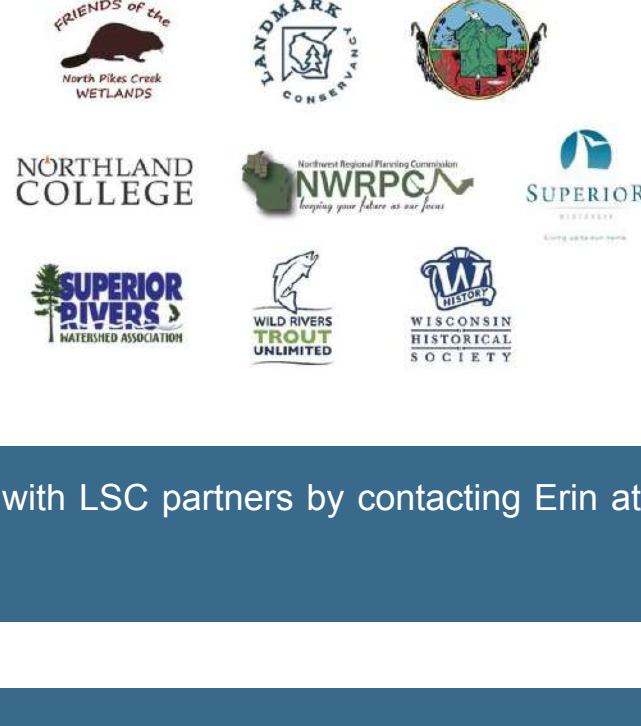
**Surface Water Grant Program** • Wisconsin Department of Natural Resources • [Applications due November 1st](#)

### Lake Superior Collaborative Partners

#### Funding Partners

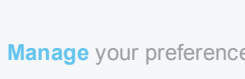


#### Partners-At-Large



Share your organization's news with LSC partners by contacting Erin at [erin.burkett@wisc.edu](mailto:erin.burkett@wisc.edu).

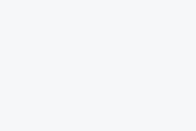
Share this email:



[Manage](#) your preferences | [Opt out](#) using TrueRemove™  
Got this as a forward? [Sign up](#) to receive our future emails.  
View this email [online](#).

28270 County Highway G  
Ashland, WI | 54806 US

This email was sent to .  
To continue receiving our emails, add us to your address book.



[Subscribe](#) to our email list.