

Lake Superior Collaborative News

August 2020



The Lake Superior Collaborative (LSC) was formed to facilitate collaboration and coordination among the governmental and non-governmental organizations and academic institutions that work to protect and restore natural resources in Wisconsin's Lake Superior Basin.

Announcements

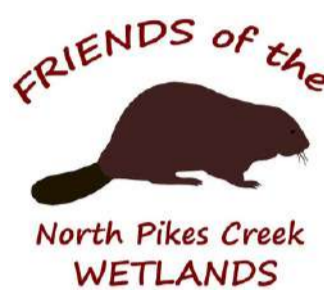
- **LSC launches website** - The Lake Superior Collaborative is online! Visit <https://fyi.extension.wisc.edu/lakesuperiorcollaborative/> to learn more about the LSC.
- **Sara Hudson appointed to Great Lakes Water Quality Board** - LSC Steering Team member and Director of the City of Ashland Parks and Recreation Department, Sara Hudson, was recently appointed to the International Joint Commission (IJC) Great Lakes Water Quality Board. Board members serve an advisory role to the IJC, an organization established by the United States and Canada to implement the Great Lakes Water Quality Agreement. Hudson and her fellow board members review this implementation process, identify emerging Great Lakes issues, make recommendations for strategies to prevent and resolve complex challenges facing the Great Lakes, and advise relevant jurisdictions as they implement these approaches.
- **LSC hires new coordinator** - Erin Burkett joined the University of Wisconsin-Madison's Division of Extension in mid-March. As the Lake Superior Outreach Specialist, Erin coordinates the Lake Superior Collaborative and assists with the Lake Superior National Estuarine Research Reserve's [Coastal Training Program](#). Learn more about Erin [here](#).

LSC Partner Spotlight

Friends of the North Pikes Creek Wetlands

(<https://northpikescreek.org/>) is a 501(c)(3), grassroots, community organization dedicated to the long-term protection, scientific management, and educational use of the forested wetland properties in the headwaters of North Pikes Creek, located in northern Bayfield County. The Friends' newly established Beaver Hollow Outdoor Education Area features a parking area, pavilion, an ADA accessible walkway, boardwalk and viewing platform overlooking a Great Blue Heron rookery.

If you are interested in partnering with FNPCW on an education project or program, contact President Kathy Wendling at info@northpikescreek.org.



LSC Partner News

Hello from Alex Faber, new Executive Director at Superior Rivers Watershed Association



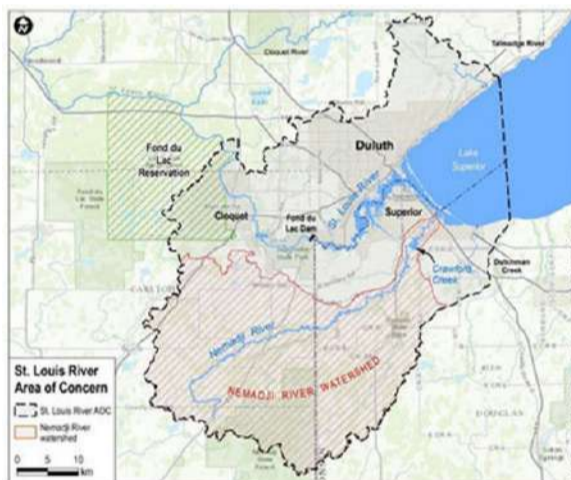
A "steep learning curve" was too on-the-nose. Two months into my new position as the Executive Director, and I am still learning all the new things I don't even know that I need to know! I've connected with so many great people doing awesome work for the water in our region.

If I haven't met you yet, reach out! I want to connect and learn more from you and your organization. - Alex Faber, alex@superiorrivers.org, <https://www.superiorrivers.org/>

Wisconsin DNR releases three new videos about the St. Louis River Area of Concern.

These videos share highlights from three projects, including Wild Rice Restoration, Wisconsin Point Dune Restoration, Piping Plover Habitat Restoration, and Barkers Island Swimming Beach Restoration.

Access the videos on the DNR's new website [HERE](#) under the "Resources" tab.



Map of St. Louis River Area of Concern.
Source: Wisconsin DNR

Funding Opportunities

- Surface Water Grants, Wisconsin DNR, <https://dnr.wi.gov/Aid/SurfaceWater.html>
- Fish Habitat Conservation Grant, Midwest Glacial Lakes Partnership, <http://midwestglaciallakes.org/grant>
- Building Resilient Infrastructure and Communities (BRIC), FEMA, <https://www.fema.gov/grants/mitigation/building-resilient-infrastructure-communities>
- Coastal Management Grants, Wisconsin Coastal Management Program, <https://doa.wi.gov/Pages/LocalGovtsGrants/CoastalGrants.aspx>
- Joint Solicitation for Groundwater Research and Monitoring, State of Wisconsin, <https://www.wri.wisc.edu/opportunities/state-of-wisconsin-joint-solicitation/>

Quick Read

[Five Essential Skills for Successful Watershed Leaders from the North Central Region Water Network.](#)



Contribute to future newsletters

What future events and content would you like to see from the Lake Superior Collaborative? Do you have an announcement to share with the LSC community?

[Take our short survey to let us know.](#)

Share this email:



[Manage](#) your preferences | [Opt out](#) using TrueRemove™
Got this as a forward? [Sign up](#) to receive our future emails.
View this email [online](#).

29270 County Highway G
Ashland, WI | 54806 US

This email was sent to .
To continue receiving our emails, add us to your address book.

emma

[Subscribe](#) to our email list.